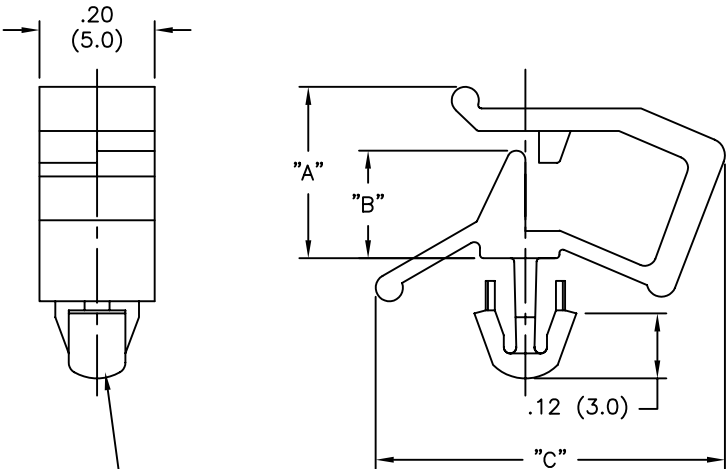


PART NO.	"A" REF.	"B"	"C" REF.
WS-SE1-1-01	.19 (4.8)	.09 (2.4)	.50 (12.6)
WS-SE1-2-01	.26 (6.7)	.16 (4.2)	.59 (15.1)
WS-SE1-3-01	.34 (8.5)	.23 (5.7)	.81 (20.3)



TO FIT A $.138 \pm .003$
 (3.50 ± 0.08) DIA. HOLE,
 IN A $.02$ TO $.06$
 $(0.5$ TO $1.6)$ THICK PANEL

NOTES:

- MATERIAL: NYLON 66 (RMS-01).
 FLAME RETARDANT NYLON 66 (RMS-19)
 AVAILABLE BY SPECIAL ORDER.
- COLOR: NATURAL

A		CHANGED FILE NO. AND TITLE BLOCK		SM 10.25.02	TITLE: WIRE SADDLE-SIDE ENTRY				DWG IN IN (MM)	
REV		DESCRIPTION		ENGR DATE	TOLERANCES UNLESS NOTED .XX= $\pm .010$.XXX= $\pm .005$ FRAC= $\pm 1/64$ ANG= $\pm 1^\circ$		FILE # WS-SE1	DWN: J.B.	DT: 08-28-95	FINAL
					MAT'L: SEE NOTES		CHKD:	ENGR:	PART #	
					RE: RICHCO, INC.		RICHCO INC. PO BOX 804238, CHICAGO, 60680 (773) 539-4060		SEE TABLE	
									PRINT TYPE CA	